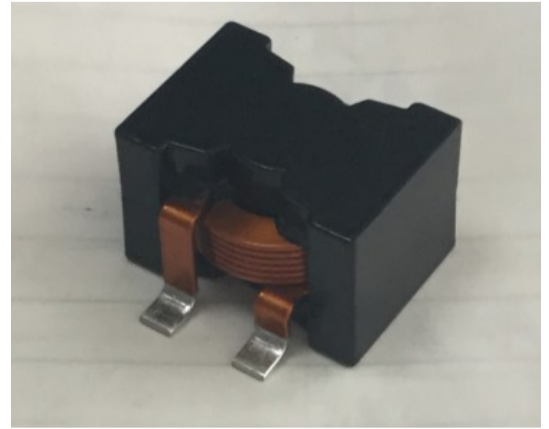


■ PH2818

Features 特点

- Susing flat wire, and SMD type. 采用扁平线, 贴片类型
- Low radiation noise by magnetically shielded construction
闭合磁路封装, 低辐射
- High current, Low resistance. 大电流, 低电阻
- Operating temperature : -40°C~+125°C. 工作温度: -40°C~+125°C
- Tape and reel packaging: -40°C to +80°C 卷带包装: -40°C 至 +80°C
- Resistance to soldering heat Max three 40 second reflows at +260°C,
parts cooled to room temperature between cycles
耐焊接热 最多三个 40 秒回流 +260°C, 部件在循环之间冷却至室温
- Moisture Sensitivity Level (MSL) 1 (unlimited floor life at <30°C /
85% relative humidity)
湿气敏感度等级 (MSL) 1 (在 <30°C 时的无限车间寿命/ 85% 相对湿度)



Applications 应用

- high efficiency DC/DC converters. 高效 DC/DC 转换器
- Single and polyphase buck converters. 单相、多相降压转换器
- Filter for audio applications. 音频滤波应用
- Optimized for high current boost applications. 大电流升压应用优化

Electrical characteristics 电气特性

Part number	①Inductance μH ±10%	②DCR 直流电阻 mΩ		③SRF 自谐频率 MHz		④Isat 饱和电流 A typical			⑤Irms 温升电流 A typical	
		typ	max.	typical	10% drop	20% drop	30% drop	20°Crise	40°Crise	
PH2818-332KL	3.3	2.4	2.64	25	90.0	98	100	22	33	
PH2818-472KL	4.7	2.4	2.64	20	70	76	78	22	33	
PH2818-682KL	6.8	2.4	2.64	17	50	54	55	22	33	
PH2818-103KL	10	2.4	2.64	13	32.8	35	37	22	33	
PH2818-153KL	15	2.4	2.64	11	22	24	26	22	33	
PH2818-223KL	22	2.4	2.64	9	15.5	17	18	22	33	
PH2818-333KL	33	2.4	2.64	7	10.5	11	11.5	22	33	

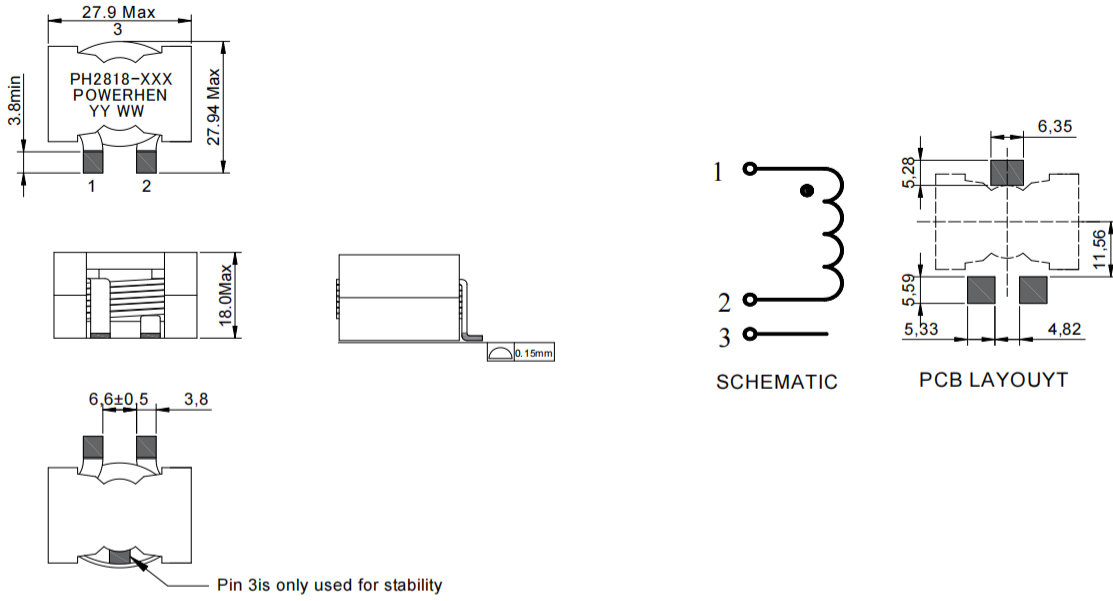
Remark

- ①Inductance is measured with a LCR meter Agilent 4284A or equivalent.
Test frequency at 500kHz
- ②DC resistance is measured with Keithley 580 Milliohm Meter, or equivalent.
Reference ambient temperature 25°C
- ③SRF measured using an Agilent 4395A network analyzer and an Agilent 16193A test fixture.
- ④DC current at 25°C that causes the specified Inductance drop from its value without current.
- ⑤Current that causes the specified temperature rise from 25°C ambient. This information is for reference only and does not represent absolute maximum ratings.
- ⑥Electrical specifications at 25°C

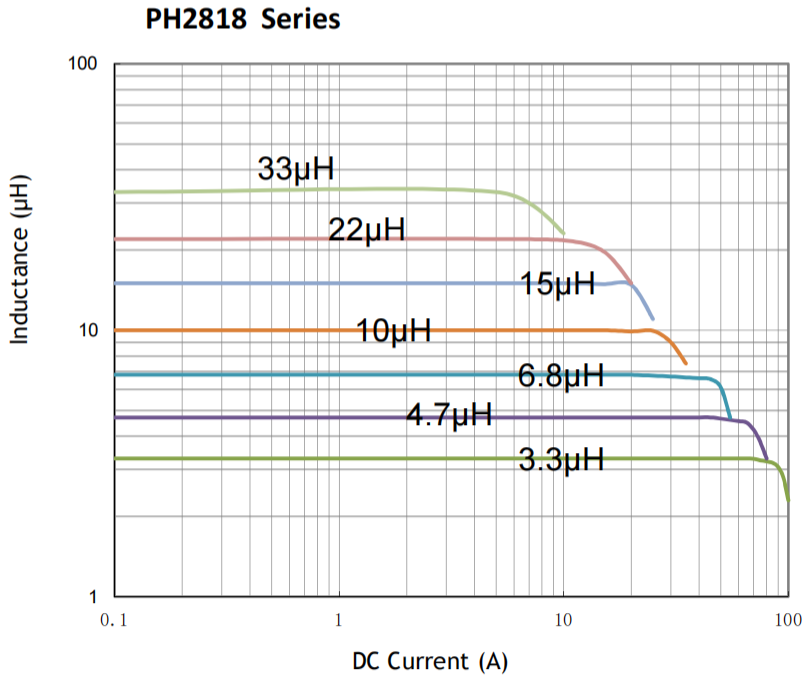
备注

- ①电感量测试采用 Agilent 4284A 数字电桥或同等仪器;
测试频率 500KHz
- ②直流电阻测试采用 Keithley 580 毫欧表或同等仪器;
环境温度 25°C
- ③SRF 使用 Agilent 4395A 网络分析仪和 Agilent 16193A 测试夹具测量。
- ④直流电流在 25°C, 加载导致指定电感从没有电流的值下降。
- ⑤导致指定温度从 25°C 环境温度上升的电流。此信息仅供参考, 不代表绝对最大额定值。
- ⑥25°C 时的电气规格

Dimensions 结构尺寸

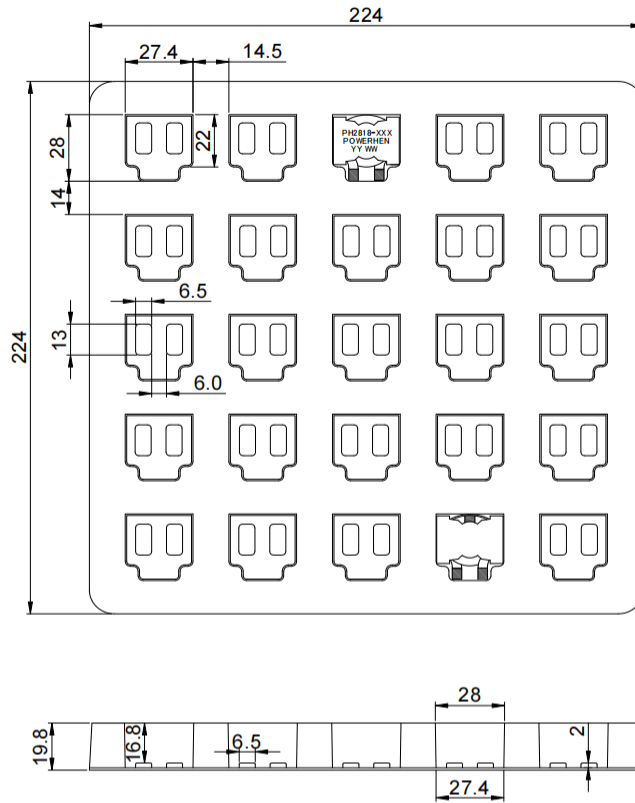


Electrical Characteristic Curve 电气性能曲线



■ Packaging Specification - tray: [mm]

包装规格 - 托盘包装: [mm]



Weight 重量: 36.3g/PCS
 Packaging 包装数量: 25 PCS/盘